

- FITNICE is a Vertisol brand manufactured in Europe under strict guidelines.
- The versatility of FITNICE offers solutions for floor and wall coverings, and for upholstery for interior and exterior. A new concept of materials for living spaces.
- FITNICE is made of vinyl coated high tenacity: Polyester fabric (85% PVC+15%PES Backing: 100% PES FR) with a backing of recycled material).








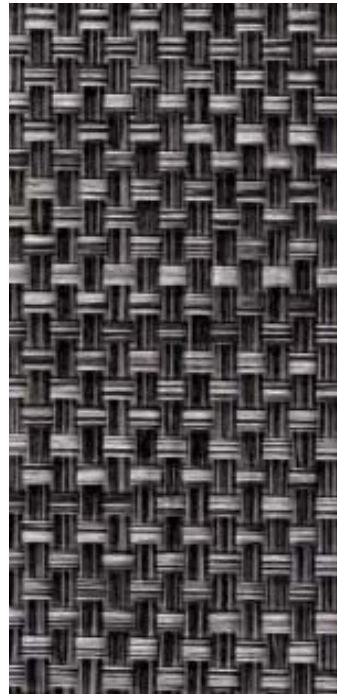
Advantages

- Combination between technology, aesthetics and comfort in one single design.
- Ensure the warmth and decorum of interior fabrics.
- A unique material unalterable and unaffected by the pass of time.
- A perfect performance with flame
- An antibacterial and antifungal properties.
- A prestigious quality certificated ISO 9001.
- A high level of soundproofing and thermal insulation.



TYPES OF FITNICE

WICKER	OPERA PRIMA	TIME IN TOWN	LIKE HOME	PLACES
				



FLOOR & WALL COVERING

SPECIFICATIONS

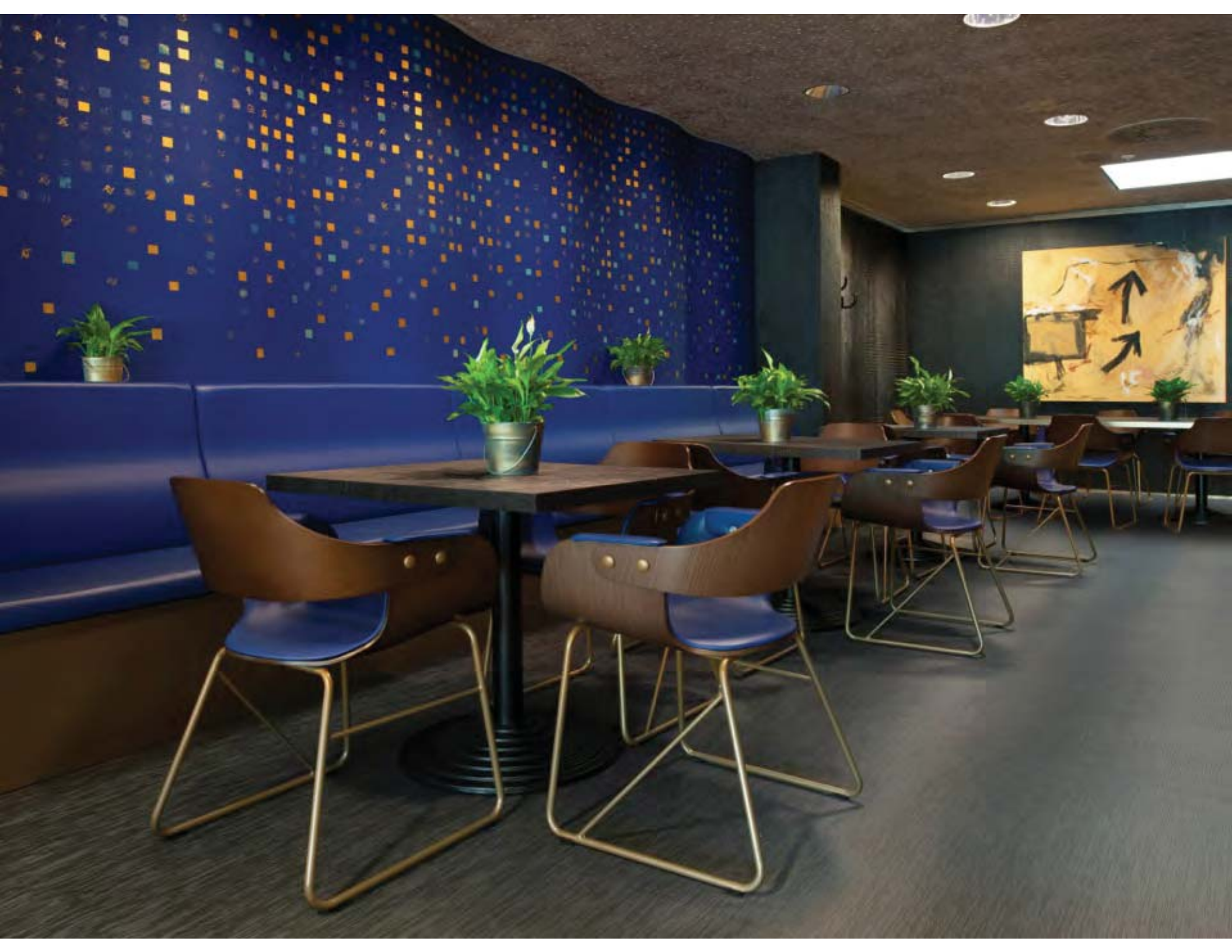
TECHNICAL DATA



COMPOSITION	
THICKNESS (mm)	
DIMENSIONAL STABILITY	
CASTOR CHAIR TEST	
ABRASION RESISTANCE	
THERMAL CONDUCTIVITY	
SOUND INSULATION	
STATIC ELECTRICITY	
SLIP RESISTANCE	
FIRE CLASSIFICATION	
ROLL WIDTH	
ROLL LENGTH	
TILE DIMENSION	

WICKER

87% PVC+ 13% PES Backing:100% PVCTHICKNESS (mm)	
	2,9 ± 5%
	0% variation
	>25000 cycles
	>100000 cycles
	0.02 W/m ² K
	11 dB
	<1kV
	>0.4
	Bfl-S1
	190 cm
	20 ml
	60X60 cm



 LEXUM

STOJÍ ZA TO VIDĚT
STYLOVĚ
KONSTRUKČNĚ

Stojí za to vidět



ZARA

LEXUM STOJÍ ZA TO VIDĚT







